

AIRCRAFT WHEEL & BRAKE DIVISION

PARKER HANNIFIN CORPORATION

AVON, OHIO

PARTS LIST

199-215 WHEEL & BRAKE KIT

SKY STAR HOME BUILT AIRCRAFT

<u>PART NUMBER</u>	<u>IBM CODE</u>	<u>DESCRIPTION</u>	<u>QUANTITY</u>
30-224	030-22400	Brake Assembly	2
40-281	040-28100	Wheel Assembly	2
Ⓐ 50-150	050-15000	Installation Instruction	1

Note: This Kit will Convert one Aircraft to use Cleveland Main Wheels & Brakes.

199-215  
11-08-93, N/C (309-83)  
01-06-94, A (0310-33) 88

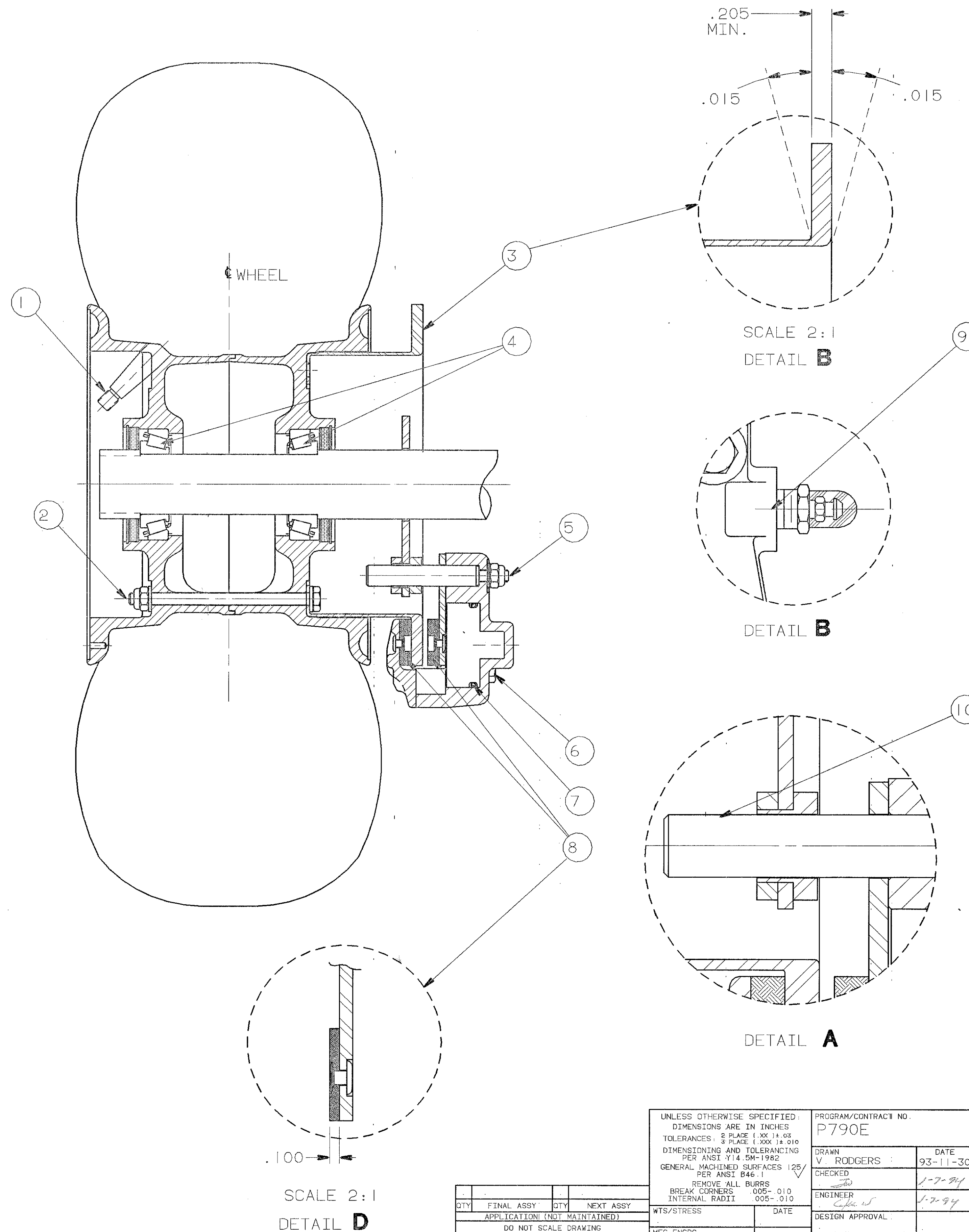
THE PART SHOWN HEREIN IS A PROPRIETARY PRODUCT OF PARKER HANNIFIN UNLESS NOTED AS CUSTOMER DESIGNED. PARKER RESERVES ALL RIGHTS TO THE INFORMATION AND DESIGN DISCLOSED HEREIN.

THIS DOCUMENT CONTAINS INFORMATION THAT IS CONFIDENTIAL AND PROPRIETARY TO PARKER HANNIFIN CORPORATION. THIS DOCUMENT IS FURNISHED ON THE UNDERSTANDING THAT THE DOCUMENT AND THE INFORMATION IT CONTAINS WILL NOT BE COPIED OR DISCLOSED TO OTHERS EXCEPT WITH THE WRITTEN CONSENT OF PARKER, WILL NOT BE USED FOR ANY PURPOSE OTHER THAN CONDUCTING BUSINESS WITH PARKER, AND WILL BE RETURNED AND ALL FURTHER USE DISCONTINUED UPON REQUEST BY PARKER. COPYRIGHT PARKER. YEAR OF COPYRIGHT IS FIRST YEAR INDICATED ON THIS DOCUMENT. ALL RIGHTS RESERVED.

REVISIONS						
CHANGE NOTICE	ZONE	LTR	DESCRIPTION OF CHANGE	CHG BY	CHK BY	DATE
0310-33			PRODUCTION RELEASE	VR	See	1-7-84

## NOTES:

- CAUTION**  
ALWAYS DEFLATE TIRE BEFORE REMOVING MOUNTED WHEEL ASSEMBLY FROM AXLE, AND OR TIE BOLTS FROM WHEEL..
- TORQUE WHEEL NUTS (P/N MS21044-N4) TO 90 IN-LBS.
- BRAKE DISC (P/N 164-23400) MUST BE REPLACED WHEN THE FLANGE THICKNESS MEASURES .205. WARPAGE OF THE DISC BEYOND .015 IN EITHER DIRECTION IS ALSO CAUSE FOR REPLACEMENT.
- THE BEARING CONES. (P/N 214-00400) SHOULD BE CLEANED AND REPACKED EVERY 100 FLIGHT HOURS OR AT A MINIMUM, ANNUALLY. BEARING GREASE SHOULD MEET THE REQUIREMENTS OF MIL-G-1322.
- TORQUE ANCHOR BOLT NUTS (P/N MS21044-N4) TO 65 IN-LBS.
- TORQUE ASSEMBLY TIE BOLTS TO 75+80 IN-LBS.
- BRAKE ASSEMBLY SEALS ARE COMPATIBLE WITH MIL-H-5606 OR MIL-H-83282 HYDRAULIC FLUID. PISTON SEAL O'RING IS (P/N AN6227-27 OR MS28775-222).
- BRAKE LINING (P/N 066-10500) MUST BE REPLACED WHEN THICKNESS MEASURES .100.
- PORTS ARE 1/8-27 N.P.T.F. THREADS. IT IS SUGGESTED THAT THREAD LUBE BE USED WHEN INLET OR BLEEDER FITTINGS ARE INSTALLED. FINAL TORQUE ON FITTINGS SHOULD BE 65-75 IN-LBS.
- ANCHOR BOLTS (P/N 069-01900) MUST SLIDE FREELY IN TORQUE PLATE (P/N 075-14200). AT EACH LINING CHANGE INSPECT ANCHOR BOLT HOLES IN TORQUE PLATE FOR DIRT, CORROSION ETC. CLEAN HOLES WITH FINE GRIT EMERY CLOTH, AND COAT WITH A DRY FILM LUBRICANT PRIOR TO REASSEMBLY.



UNLESS OTHERWISE SPECIFIED: DIMENSIONS ARE IN INCHES TOLERANCES: 2 PLACE (.XX) ±.05 3 PLACE (.XXX) ±.010 DIMENSIONING AND TOLERANCING PER ANSI Y14.5M-1982 GENERAL MACHINED SURFACES 125 PER ANSI B46 REMOVE ALL BURRS BREAK CORNERS .005-.010 INTERNAL RADIUS .005		PROGRAM/CONTRACT NO. P790E	DATE 93-11-30	CLEVELAND WHEELS & BRAKES Aircraft Wheel And Brake Division Parker Hannifin Corporation Avon, Ohio 44011	
QTY	FINAL ASSY	QTY	NEXT ASSY	WTS/STRESS	DATE
APPLICATION (NOT MAINTAINED)					
DO NOT SCALE DRAWING					
THIS DRAWING IS COMPLETELY DEFINED BY THE COMPUTER DATABASE. ANY CHANGES TO THE DATABASE WILL BE REFLECTED IN ALL COPIES. COPIES MUST BE OBTAINED FROM THE DATABASE. REVISIONS TO THIS DRAWING MUST BE BY DATABASE. REVISION ONLY - NO REVISIONS MAY BE MADE BY HAND.					
MFG ENGRG		DESIGN APPROVAL		SIZE	CAGE CODE
QUAL ASSUR		PROJ APPROVAL		D	33269
RELEASE DATE		DWG. NO.		50-150	REV
		SHEET		1 OF 1	