

Illustrated Parts List

Brake Assembly – 10” External Dual Cylinder, Dual Piston

30-142

Metallic Lining

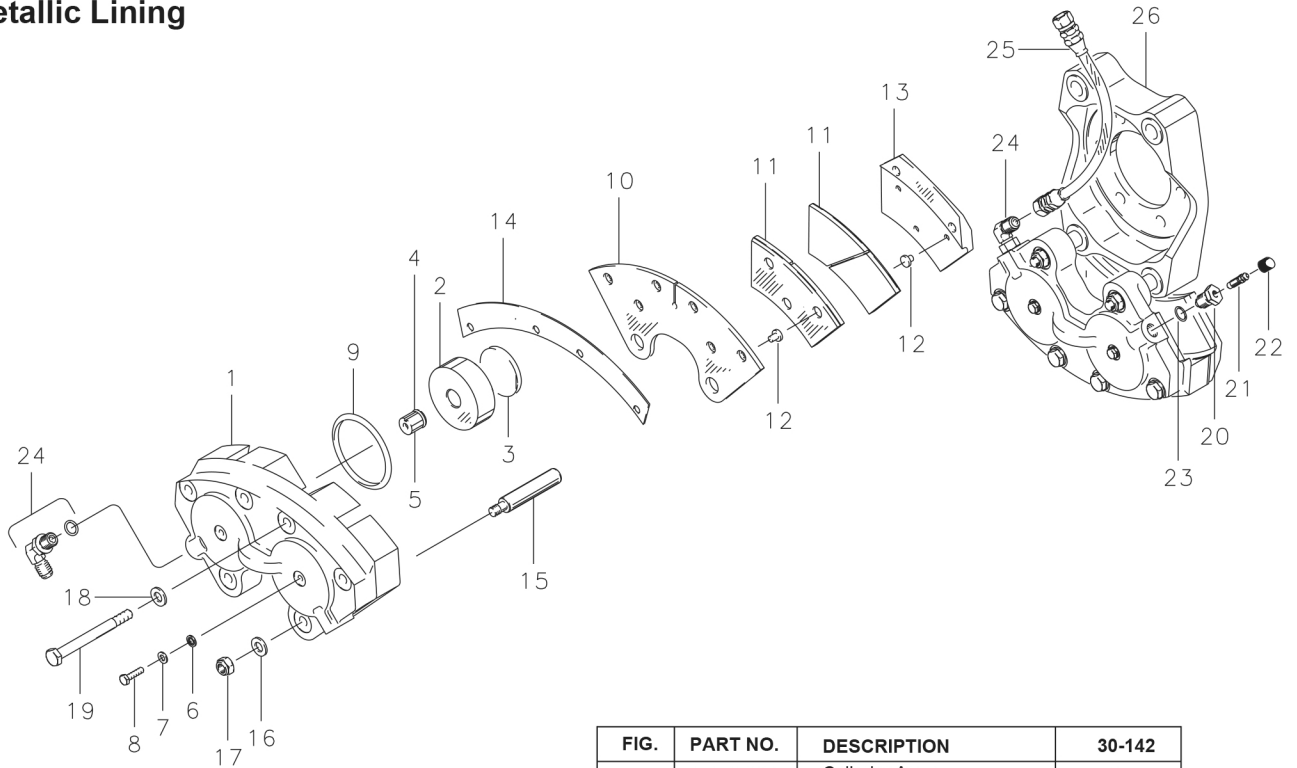


FIG.	PART NO.	DESCRIPTION	30-142
	091-13500	Cylinder Assy.	2
1	061-10300	Cylinder	2
	092-04100	Piston Assy.	4
2	062-04100	Piston	4
3	088-00100	Insulator	4
4	082-02000	Friction	4
5	139-08100	Piston Guide	4
6	095-02600	Stat-O-Seal	4
7	095-10800	Washer (AN960-10L)	4
8	103-00100	Bolt (AN3-5A)	4
9	101-24200	O-Ring	4
	073-05900	Pressure Plate Assy.	2
10	063-04600	Pressure Plate	2
11	066-07300	Lining	8
12	177-01600	Pin	24
	074-04500	Back Plate Assy.	4
13	064-03800	Back Plate	4
14	068-03900	Shim-Insulator	2
15	069-01200	Anchor Bolt	4
16	095-10700	Washer (AN960-516L)	4
17	094-10400	Nut (MS21044-N5)	4
18	095-10500	Washer (AN960-516)	8
19	103-22500	Bolt (AN5H-22A)	8
20	081-00200	Bleeder Seat	1
21	079-00300	Bleeder Screw	1
22	183-00100	Bleeder Cap	1
23	101-00700	O-Ring (MS28775-012)	3
24	104-03100	Fitting	2
25	207-00800	Hose Assy.	1
26	075-13700	Torque Plate Assy.	1