

30-182

Metallic Lining

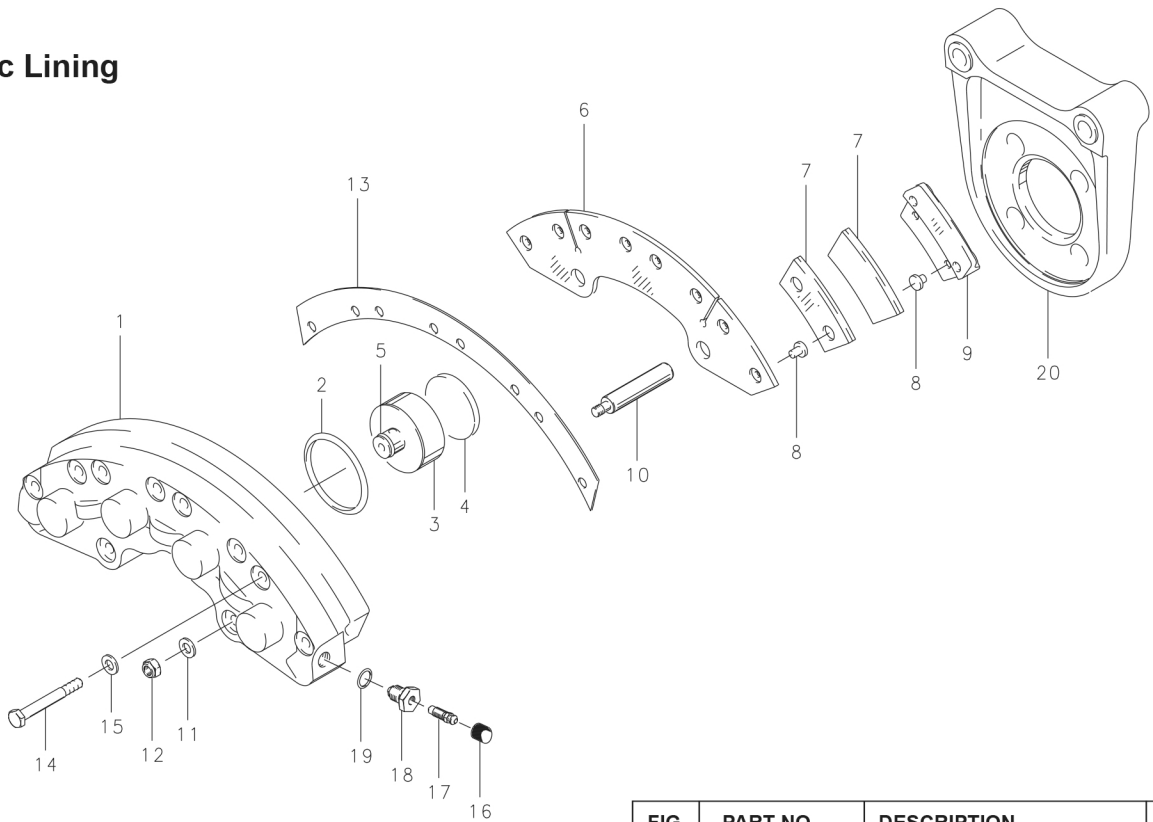


FIG.	PART NO.	DESCRIPTION	30-182 (1)	
	091-16100	Cylinder Assembly	1	
1	061-11800	Cylinder	1	
	2	101-05200	O-Ring (MS28775-224)	4
	092-06700	Piston Assembly	4	
3	062-06700	Piston	4	
4	088-00100	Insulator	4	
5	082-02000	Friction Spring	4	
	073-08500	Pressure Plate Assembly	1	
6	063-02500	Pressure Plate	1	
8	177-00300	Pin	8	
7	066-03300	Lining	4	
	074-06600	Back Plate Assembly	4	
9	064-01600	Back Plate	4	
8	177-00300	Pin	8	
7	066-03300	Lining	4	
10	069-01900	Anchor Bolt	2	
11	095-10200	Washer (AN960-416L)	2	
12	094-10300	Nut (MS21044-N4)	2	
13	068-02800	Shim-Insulator	1	
14	103-14300	Bolt	8	
15	095-10400	Washer (AN960-416)	8	
16	183-00100	Cap-Bleeder	1	
17	079-00300	Screw-Bleeder	1	
18	081-00500	Seat-Bleeder	1	
19	101-50011	O-Ring (MS28775-011)	1	
20	075-17100	Torque Plate Assembly	1	

NOTES:

(1) 199-281 Conversion Kit upgrades 30-182 to 30-182A. Refer to SB7105.