

# Cleveland

Wheels & Brakes

Parker Hannifin Corporation

**Aircraft Wheel & Brake**

1160 Center Road, P.O. Box 158

Avon, Ohio 44011 USA

1-800-BRAKING (272-5464)

216-937-1272 • FAX 216-937-5409

# SERVICE BULLETIN

## CITATION MAIN WHEEL - FUSEPLUG PORT - INSPECT/REPLACE WHEEL HALF

- EFFECTIVITY:** All Parker Hannifin P/N 40-202 (S/N 101-489), 40-239 (S/N 1001-1186) and 040-23901 (S/N 1001-1221) Wheel Assemblies, and 161-12600 (S/N 101-489) and 161-15400 (S/N 1001-1221) Inner Wheel Half Assemblies.
- APPLICABILITY:** All Cessna Model 500, 501, 550, 551, S550 and 552 (T-47A) aircraft equipped with Parker 40-202, 40-239 or 040-23901 Wheel Assemblies from the factory or per Parker conversion kit 199-164 (STC SA1297GL or SA1298GL), 199-177 (STC SA1441GL), or 199-180 (New Flight Corp.) shipped from Parker prior to October 3, 1994.
- REASON:** Functional Verification - Product may have been manufactured with a blind passageway in the fuseplug port. Should a fuseplug melt, a blocked port will not allow the tire pressure to be vented.
- DESCRIPTION:** This document provides the necessary instructions and hardware requirements to functionally test the fuseplug port.
- COMPLIANCE:** Mandatory - Inspect and replace, if required, inner wheel half at next tire change, annual inspection, or no later than June 1, 1995.
- APPROVAL:** The contents of this Service Bulletin are FAA DER approved.
- WEIGHT & BALANCE:** No change.
- PUBLICATIONS:** The contents of this Service Bulletin are to be incorporated into the 40-202, 40-239 and 040-23901 Overhaul Manuals at next revision.
- MATERIALS:** Standard shop tools.
- INSTRUCTIONS:**
- I. For Wheel Assemblies Installed on Aircraft:
    1. Jack aircraft per aircraft maintenance manual until tires are clear of ground and deflate tires.
    2. Remove and retain hubcap assembly and hubcap screws.
    3. Remove and retain the two screws securing the axle nut and anti-skid transducer. Remove and retain axle nut and tapered washer.
    4. Remove main gear wheel assembly from axle.
    5. Refer to "For wheel assemblies with tires mounted" for inspection instructions.

# SERVICE BULLETIN

## INSTRUCTIONS (cont'd):

### II. For Wheel Assemblies with Tires Mounted:

1. Insure that the wheel assembly is deflated.
2. Remove a fuseplug and inflate wheel assembly to between 10 and 15 psi.
3. Place finger over empty fuseplug port to determine if air is leaking from port.
4. Let wheel assembly set for five minutes, and then check inflation pressure.
5. If no air is detected leaking from empty fuseplug port or if wheel assembly does not deflate within five minutes, contact Parker Hannifin Customer Support at (800) 272-5464 to obtain replacement wheel halves.
6. If air is detected leaking from empty fuseplug port and if wheel assembly deflates within five minutes, reinstall fuseplug and repeat steps 2 thru 6 for each of the two remaining fuseplugs.
7. If all fuseplug ports satisfy step 6, the wheel assembly may be returned to service.

### III. For Inner Wheel Half Assemblies and for Unmounted Wheel Assemblies:

1. Remove fuseplugs from inner wheel half.
2. Insert a wire of diameter .045 - .062 in. (1.14 - 1.57 mm) into each fuseplug vent hole (see Figure 1).
3. If the wire cannot be inserted so that it is visible in the fuseplug ports, contact Parker Hannifin at (800) 272-5464.
4. If the wire can be inserted so that it is visible in the fuseplug port, install a fuseplug into that port and repeat steps 2 thru 4 for the remaining fuseplug ports.
5. If all fuseplug ports satisfy step 4, the inner wheel half assembly may be returned to service.

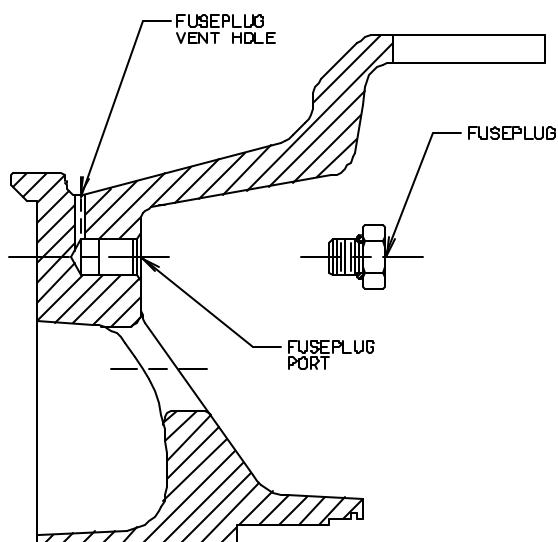


Figure 1